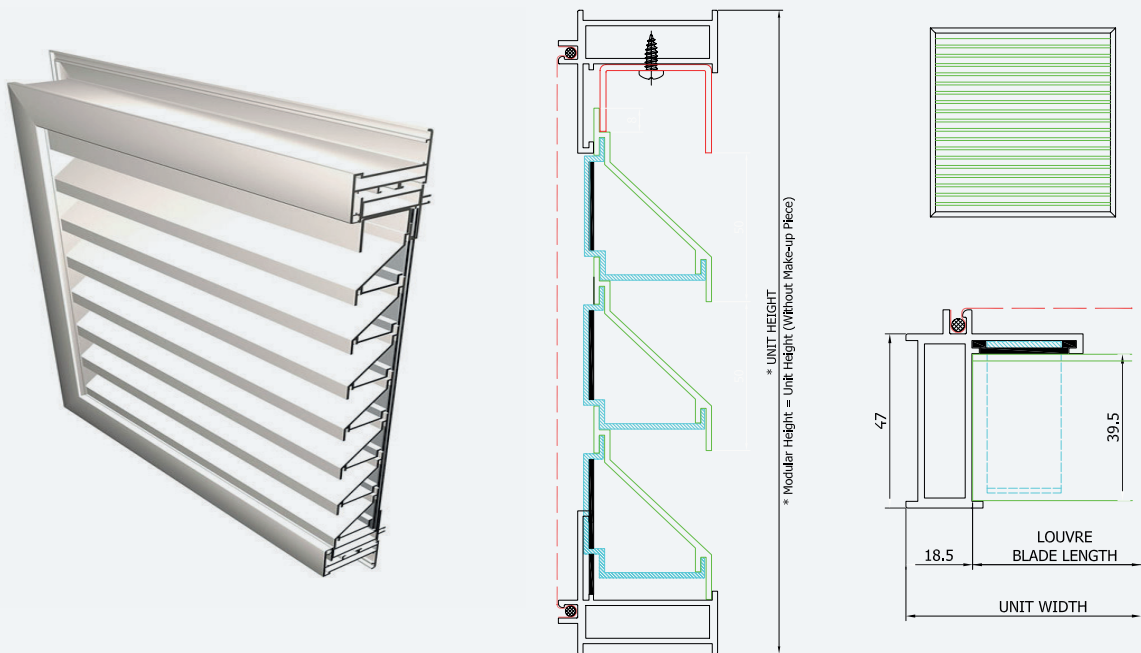


# LV-2-50

## Aluminium fixed louvre & door system (with insect screen)

As with all Brital systems, the Louvre system is manufactured to exacting standards enabling economy to be combined with strength to give many years of aesthetic, trouble-free operation.



### LV-2-50

#### System Performance



SIZE

- Louvre Height: 2400 mm (max)
- Louvre Width: 1200 mm (max)



DESIGN

- Designed so that the ventilation louvres can be installed directly onto the structure or incorporated into Brital window and door sections.
- Manufactured to exacting standards enabling economy to be combined with strength to provide many years of trouble free operation.



PERFORMANCE

- Standard and Heavy Duty louvre blades can be used to provide numerous different ventilation performance possibilities.



INSTALLATION

- Simple and quick installation method saves time and money in fabrication.

DISCOVER  
MORE ON OUR  
WEBSITE

